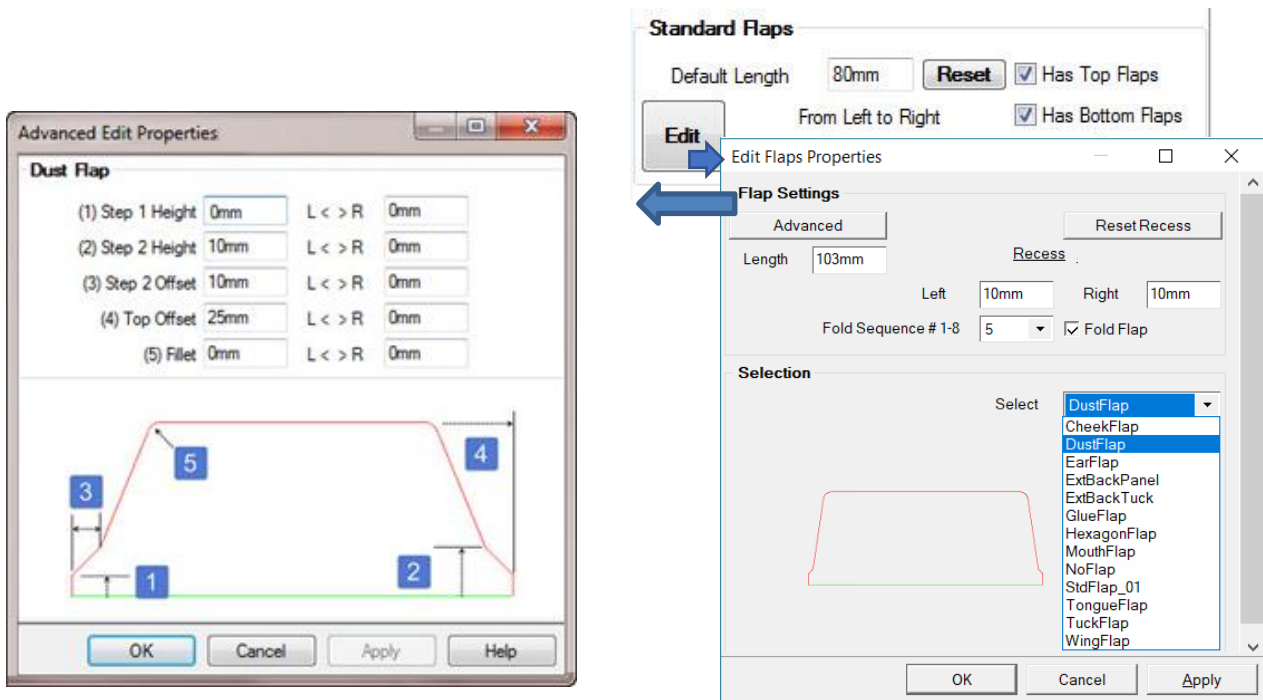


Advanced Flap Settings

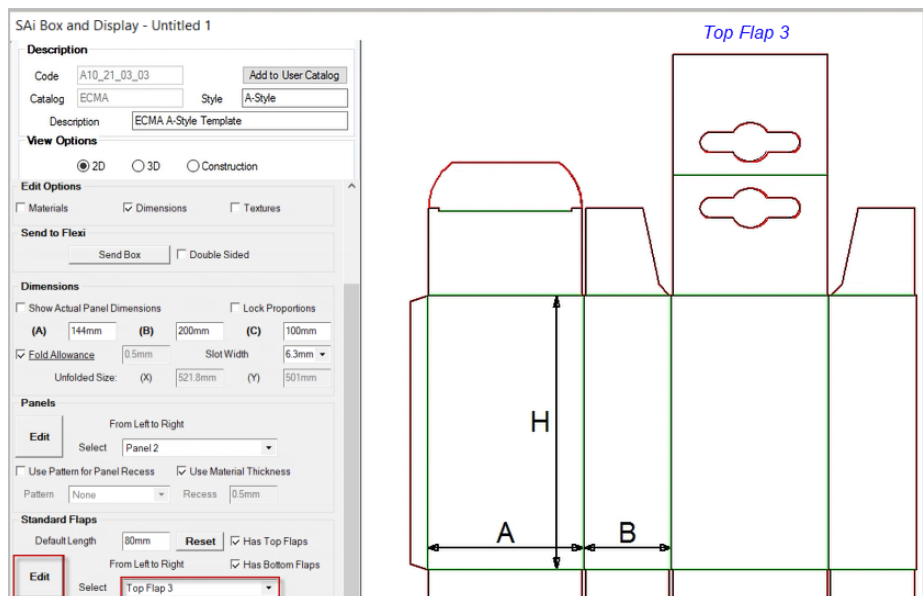
Most flaps provided with **Templates** have an **Advanced Edit Properties** page as the ones shown below left, which allow you to make changes to parameters to the required flap. This is accessed by clicking on the **Advanced** button provided.

Some flaps from the **import library*** in **FreeForm**, such as ExtBackTuck also have Advanced properties but are accessed differently. See next page.



Advanced Flaps

To illustrate the use of the Advance Button, we will use a **template** ECMA A10_21_03_03 shown in 2D View.



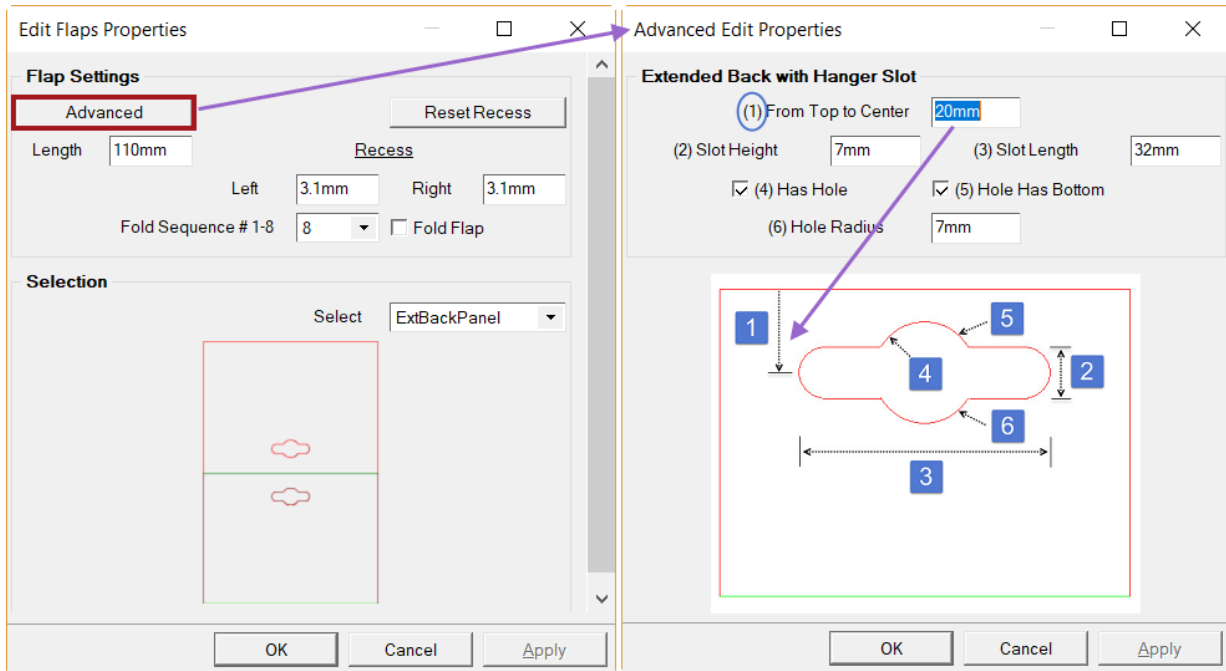
Top Flap 3 has been selected →

Click on the **Edit** button to open the **Edit Flaps Properties** page.

Advance Edit Properties

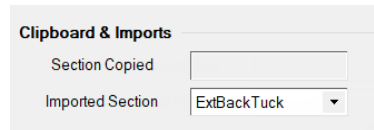
The **Edit Flaps Properties** page, as shown next page, allows you to make advanced changes to the selected Flap, by simply clicking on the **Advanced** button.

The **Advanced Edit Properties** page has a numbered diagram which relate directly to the edit/check boxes.



FreeForm Advanced Properties

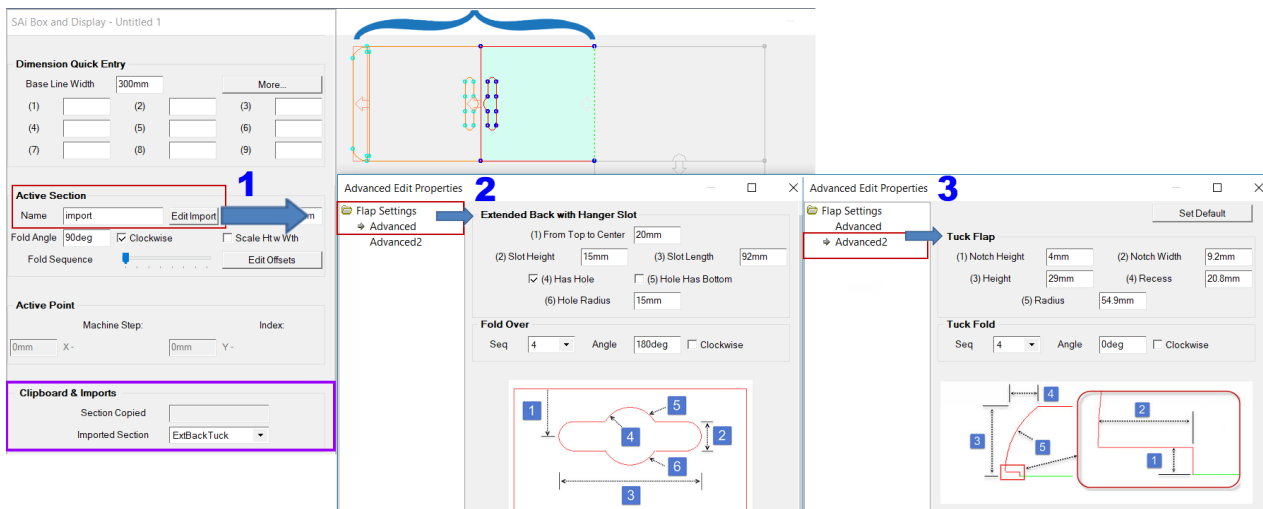
Some flaps from the **import library*** in **FreeForm**, such as **ExtBackTuck** have **Advanced** properties, shown below. See **Clipboard & Imports** video.



When you make the imported flap 'Active' as shown, ...

- 1) an 'Edit Import' button is made available. Simply click to open **Advanced Edit Properties** page.
- 2) the **Advanced Edit Properties** menu has **Advanced** edit properties for the **Extended Back**
- 3) and **Advanced2** edit properties for the **Tuck Flap**

As with **Templates**, the **Advanced Edit Properties** page has simple diagrams defining what the different parameters will change. The numbers on the diagram correspond to the edit boxes.



Box&Display