
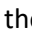
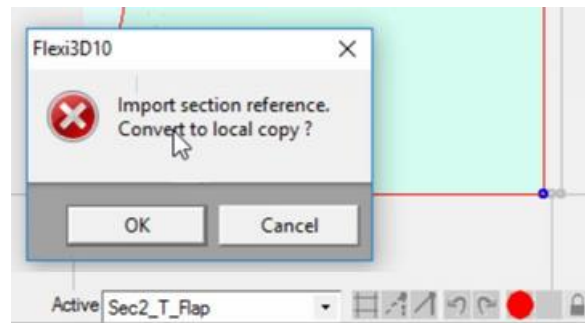


Convert to Local – Enable Change to Template

“Import section reference. Convert to local copy?”

Often flaps come from an internal sublibrary and are parametrically controlled with a friendly page available to let you change various parameters for the shape and size of the flap. The flap itself gets loaded from the sublibrary and will automatically refresh sometimes (e.g. when you reload an old drawing). But if you want to modify this imported flap in any way, you need to make a copy of this imported flap, so that in future it won't get refreshed and lose your changes.

Box&Display knows the types of changes where this local copy is needed and insists that you “Convert to local copy”, if it is required. In some cases, you will see greyed out menu options, showing things you cannot do. There are Error Indicators such as the “no entry”  that appears on the status bar - clicking on this will prompt you to “clear the imports”. If you are able to select a menu option but Box&Display cannot proceed, there will be a big red dot  ‘Failed’ indicator and you can click on that as well.



The following are the first 4 steps from Template Tutorial 200, providing an example of use...

Step 1

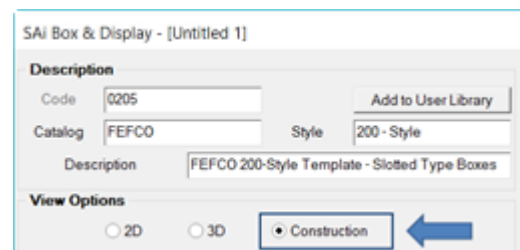
Start by opening a template

- click on the **lightning bolt**  button i.e. **New with Template**
- Select **FEFCO 0205**
- Double click selection or click **‘Create’** button

Step 2

Construction View

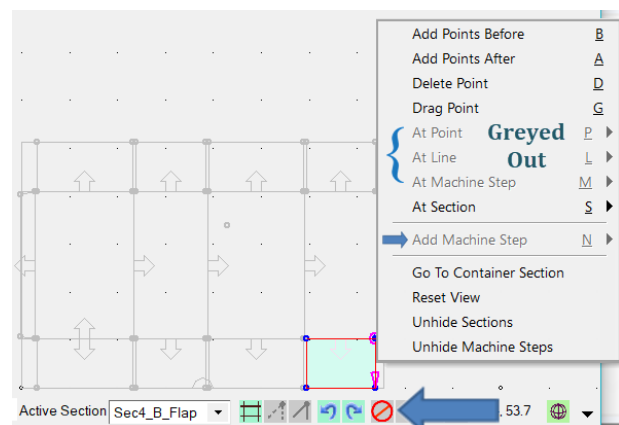
- Ensure that you are in Construction View as shown, so we can add a small flap to the bottom RH section as per image below.



Step 3

Select Active Section

- In the Preview pane, double click on the section shown, to make Active. You will know it is Active as the section turns to a light blue color.
- The status bar will also give you information about the Active Section. Just left of blue arrow it is called ‘Sec4_B_Flap’.
- Left click on line shown on the Active Section, and right click for context menu.

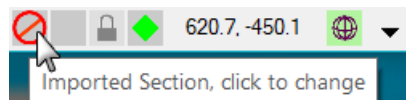


Note: Menu options are greyed out and the No Entry  sign is shown in the status bar.

Step 4

No Entry message

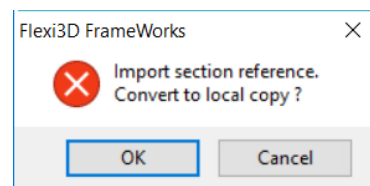
When you *hover over* the 'No Entry' sign, as shown, you will be provided with a message, informing you on why the active section or machine step is protected from some editing commands.



Left or right clicking the indicator usually allows the protection to be removed. To 'Convert to local copy'...

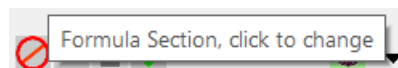
- Left click on the 'No Entry'  sign and you will get this message.

Click OK to '**Convert to local copy**' message.



If you are just adding things to an existing flap such as attaching another little flap as in Step 3, you only need to 'Convert to local copy'.

The No Entry Sign *may* still be displayed stating 'Formula Section. Click to change'.



For more information on **Formula Controlled Sections/Flaps** refer to **Chapter 4** of the **SAi Box&Display User Guide**.



Box&Display