

## Edit Flaps and Panels

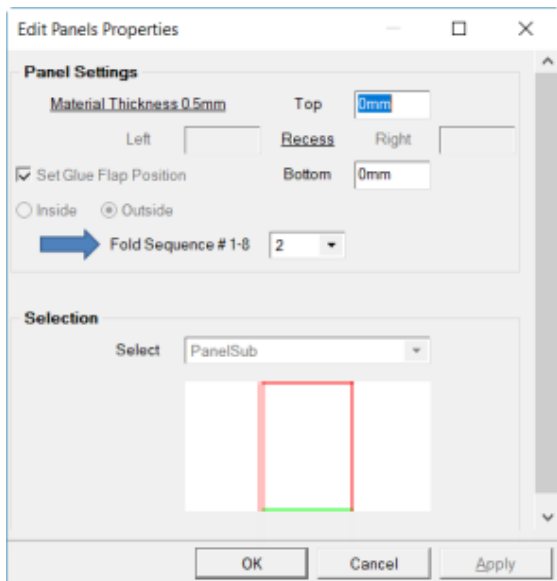
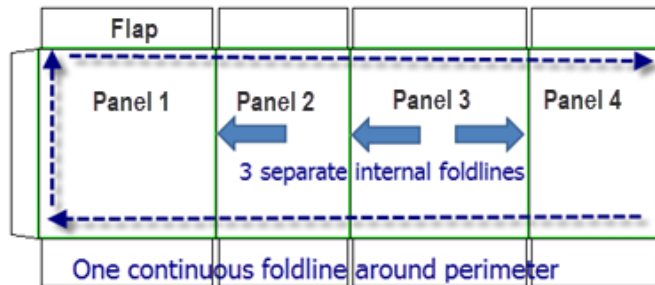
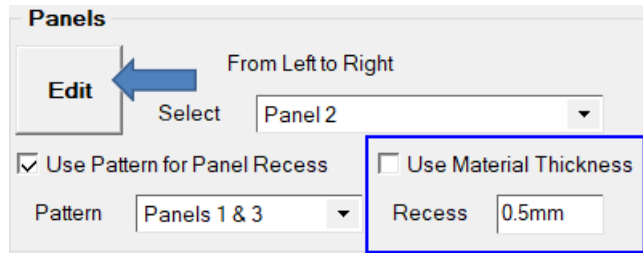
### Panels

The main sides of the box are called **Panels** and are numbered from Left to Right.

**Recess** can be used to change the overlap of flaps or panel in relation each other. For example, -1.5mm entered into the top and bottom recess will make flaps connected to the top and bottom of this panel fold in below those of panels with a 0mm recess.

Another way to recess is to **Use Pattern for Panel Recess** to adjust panel heights, and the 'Use Material Thickness' to recess by either using the default Material or specifying required recess (shown changed from 3mm to 20mm).

The benefit of using this method is that you can use one strategy for creating the perimeter foldline. The internal fold lines remain separate from the perimeter.



The **Edit** button opens the Edit Panels Properties for the currently selected Panel. An **Advanced** button *may* be present which will open more options for the panel, similar to Flaps discussed on the next page.

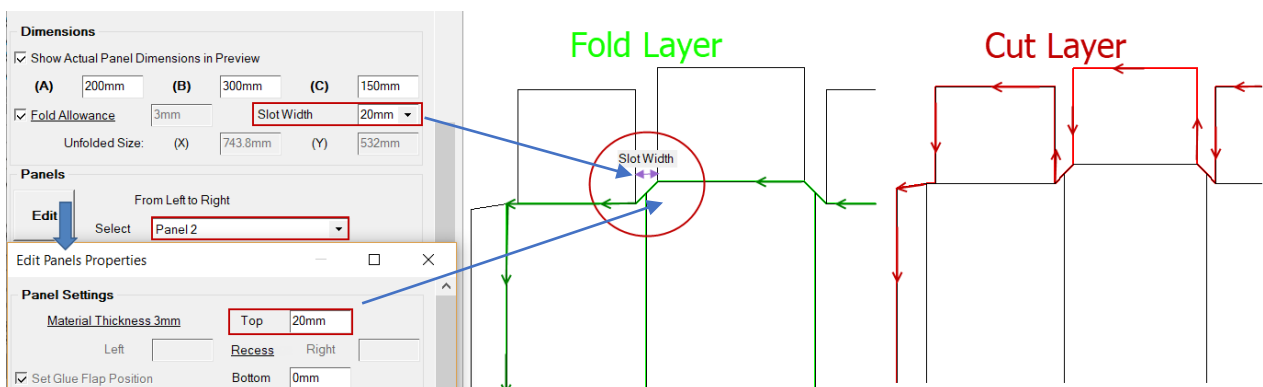
Use the **Fold Sequence** dropdown to select the order in which you want the panel to fold.

Use the **Selection dropdown** to select the type of panel to import.

### Panels and Slots

The image below shows Panel 2 with a **Slot Width** of 20mm. Using the **Edit** button to open the Panels Properties, we have changed the **Top Recess** from 0mm to 20mm to show that the perimeter foldline is continuous, in a zig zag pattern for smooth fold/cut.

See [Template Tutorial 202 Toolpath and Fold Lines](#).



## Flaps

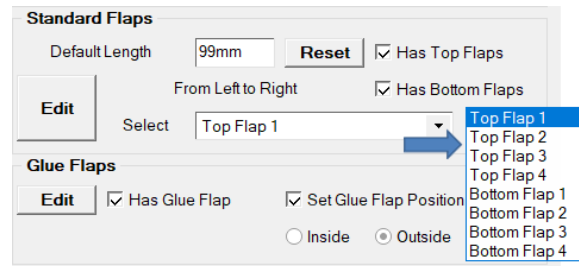
The options for Flaps work much the same as Panels, with some differences. Flaps are also numbered from Left to Right.

The **Default Length** will set the length of all the standard flaps unless they have previously edited.

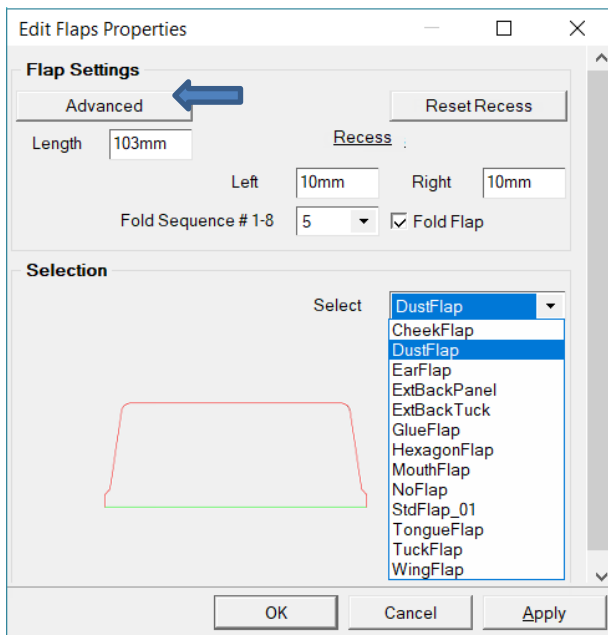
Pressing the **Reset** will set all the flaps to the default length including the edited ones.

If your design requires it, you can use the **check boxes** to add/remove all the flaps across the **Top** or the **Bottom** of the box.

Select the required flap from the dropdown menu and click the **Edit button** to open the **Edit Flaps Properties** dialog discussed below.



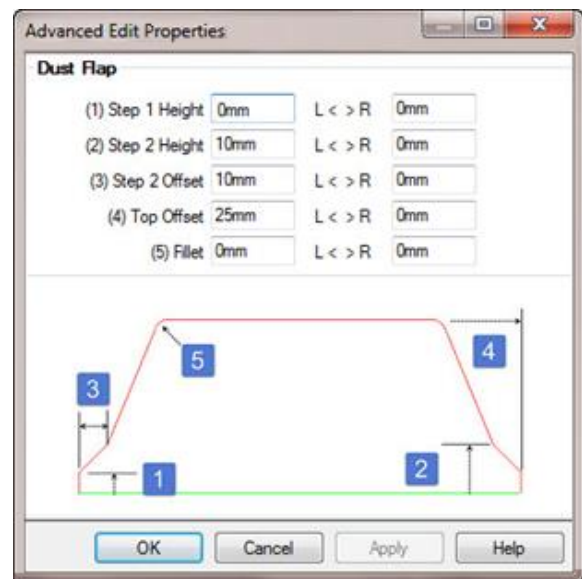
## Edit Flaps Properties



Use the **Fold Sequence** dropdown to select the order in which you want the flap to fold.

Use the **Selection dropdown** to select the type of panel to import. Example shown is a 'Dustflap'.

Most of the flaps have an **Advanced button** which opens the **Advanced Edit Properties** page for this particular flap.

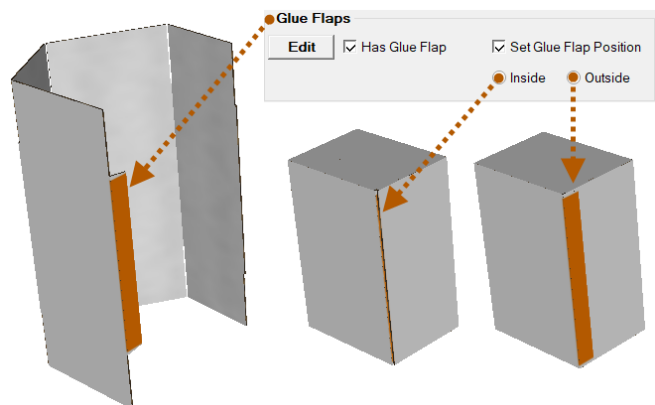


Most of the flaps from the import library will have a similar page as the one shown, with simple diagrams defining what the different parameters will change. The numbers on the diagram correspond to the edit boxes.

## Glue Flaps

Similar to the panels and standard flaps the Glue Flaps can be edited but usually have less options.

The default Glue Flap Position is Outside. If you want to override then you need to turn on '**Set Glue Flap Position**'. As shown the glue flap can be folded '**Inside**' or '**Outside**' of box.



# Box&Display