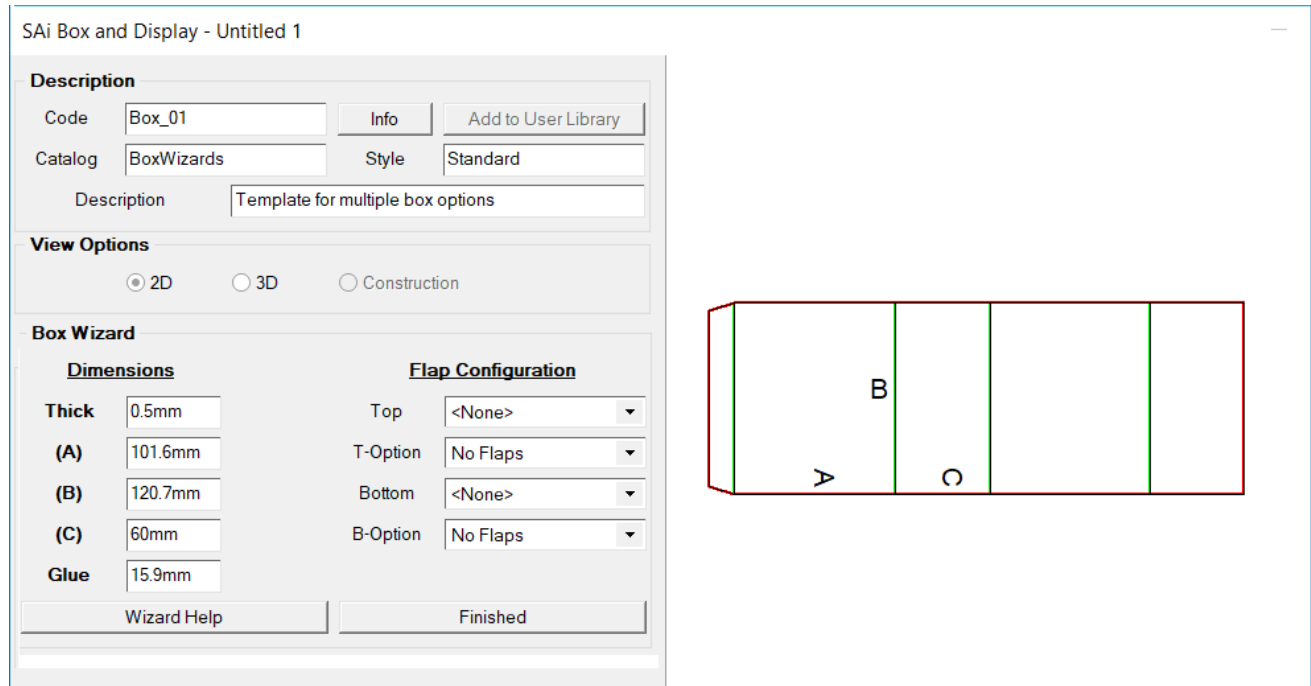


Box Wizard

Box Wizard is the perfect tool for quickly designing one off and small runs of boxes and shipping cartons. It is fast and easy to use with a very intuitive interface.

BoxWizards Catalog is available with a starting template **Box_01** which can be used to create your box and when you are finished, you can save it to your user library with your own naming convention.



Description

Optional and is typically used when you plan to save a finished box to your user library. NB: You can only [save a box to the user library](#) after you have pressed the **Finished** button.

View Options

2D (default) and **3D** View, initially, are only available. The 3D view is great for looking at the finished product and to see how it is folding. **Construction** View is available after clicking the Finished button.

Box Construction

The box offered in the wizard is a simple four panel construction to create the sides with or without added closure flaps. The Glue flap is glued to the inside or outside of the last panel to form a four-sided tube. Box dimension are really straight forward.

Dimensions		
Thick	0.5mm	Thick = The thickness of your material
(A)	101.6mm	(A) = The width of the box
(B)	120.7mm	(B) = The height of the box
(C)	60mm	(C) = The depth of the box
Glue	15.9mm	Glue = The width of the Glue flap

Flap Configuration

Use the Flap Configuration dropdowns to select the **Style** and **Options** for the closure flaps. See table below.

And finally press the **Finished** button to finalize your box.

Your box is ready to go without any further work but if you should choose to do further edits you can open the advanced properties of your box after you have pressed the Finished button.

Flap Configuration

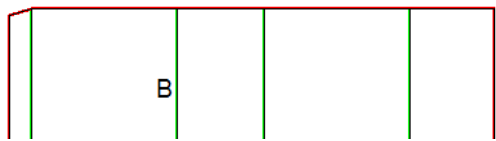
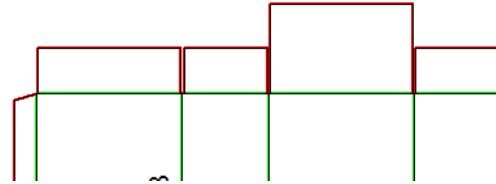
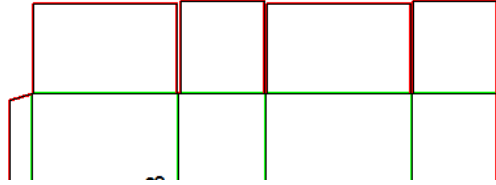
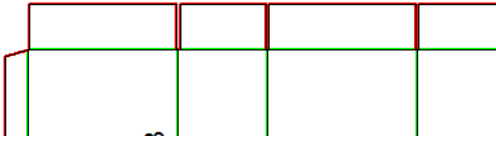
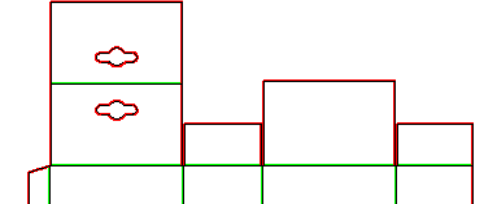
Top ▼

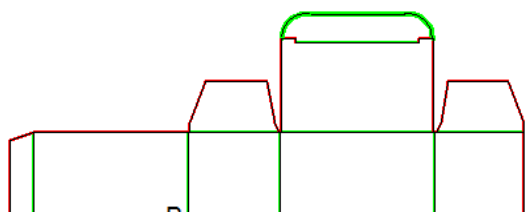
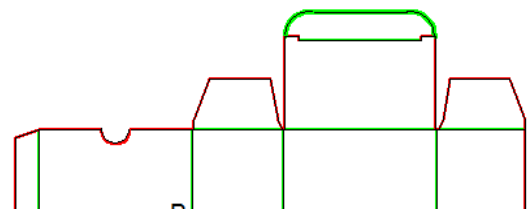
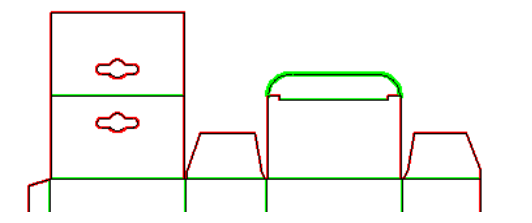
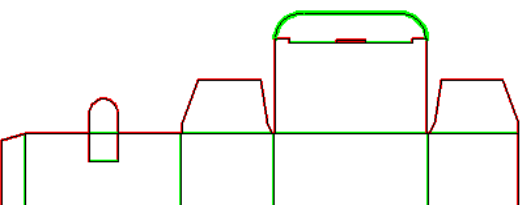
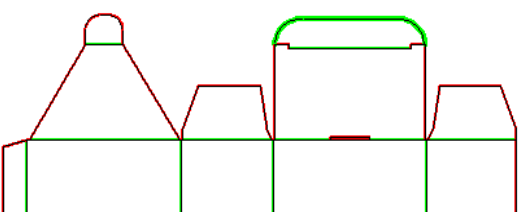
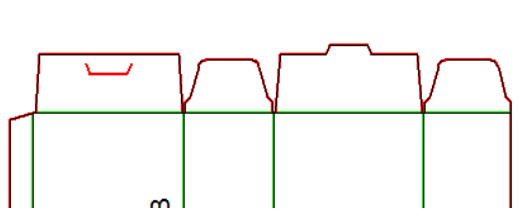
T-Option ▼

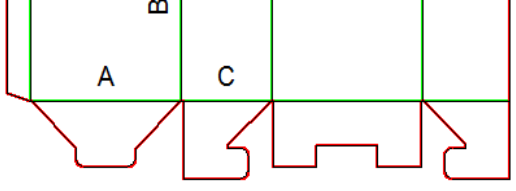
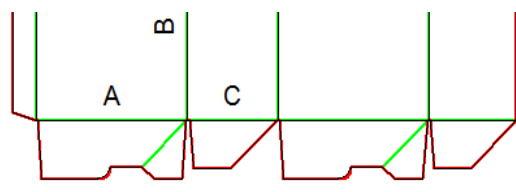
Bottom ▼

B-Option ▼

Flap Closure Style and Options

<p style="text-align: center;"><None> - No Flaps</p> <p>Used when the box is open on the top or bottom with no closure flaps</p>	
<p style="text-align: center;">Standard – Default</p> <p>Used as a glue type closure where the main wide flap is closed over the top of the other flaps</p>	
<p style="text-align: center;">Standard – Overlap</p> <p>All flaps are folded over each other</p>	
<p style="text-align: center;">Standard – Reduced Flaps</p> <p>This is the type most often used for standard shipping cartons that are usually glued or taped shut</p>	
<p style="text-align: center;">Standard – Hanging</p> <p>This type is commonly used for small items that can be hung on peg shelving The top main flap is glued shut.</p>	

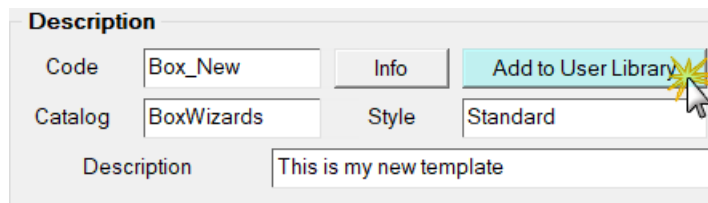
<p>Tuck-in Style 01 and 02 – Default Used for boxes that can be opened and closed for reuse</p>	
<p>Tuck-in Style 01 and 02 – Thumb Cutout Used for boxes that can be opened and closed for reuse with thumb cutout</p>	
<p>Tuck-in Style 01 and 02 – Hanging Used for boxes that can be opened and closed for reuse with Hanging flap</p>	
<p>Tuck-in Style 01 and 02 – Tab Lock Used for boxes that can be opened and closed for reuse with Tab Lock</p>	
<p>Tuck-in Style 01 and 02 – Double Lock Used for boxes that can be opened and closed for reuse with a Fold Over Lock (Top flaps only)</p>	
<p>Tab-Closure – Option 01 and 02 Used commonly for food item cartons such a cereal box for re-closure after breaking the glue seal (Top flaps only)</p>	

<p>Tongue Lock – Default Interlocking flap system, easily disassembled (Bottom flaps only)</p>	
<p>Crash Lock – Default Pre-glued integrated system used for flap pack shipping of assembled boxes (Bottom flaps only)</p>	

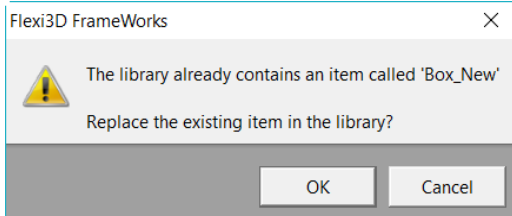
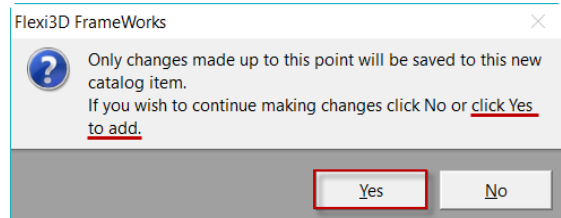
Add to User Library

Use the **Add to User Library** button to save a modified box for future use.

Before clicking on ‘Add to User Library’, you can make changes to the **Description**, or not, as required. In this example Box_01 has been changed to **Box_New** but the Catalog and Style has been left as is.



A warning message will remind you that only the current state of your box design will be saved in the catalog for future use as a template. To proceed to add to User Library, click ‘Yes’.



If the template already exists, you can choose to ‘Replace the existing item in the library’ or ‘Cancel’ and choose a new name.

Locate your **User** created Catalog templates by clicking on the **Browse Box Library** dropdown menu and selecting the **User Library** as shown below left. [NB: Default is Standard]

Box_New has been created under BOX-WIZARDS / Standard which can now be opened and edited as any other template i.e. Construction view and standard template options are available.

