

# SAi Box & Display – Quick Start Guide

## The SAi Box&Display Interface

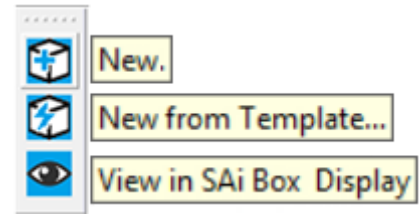
To access the Box&Display interface you need to start a new **SAi Box Display** project.

From the Flexi toolbar, you have two choices.

- (1) Start a 'New' FreeForm design from scratch  
Discussed in the **SAi Box and Display User Guide**  
Refer to Chapter 6 and Chapter 7

or

- (2) Start a new design from a template (recommended)  
Discussed in **SAi Box and Display User Guide**  
Refer to Chapter 1




The most efficient way to create a new box or display is to start from an existing template and this section will discuss the basics on how to do this.

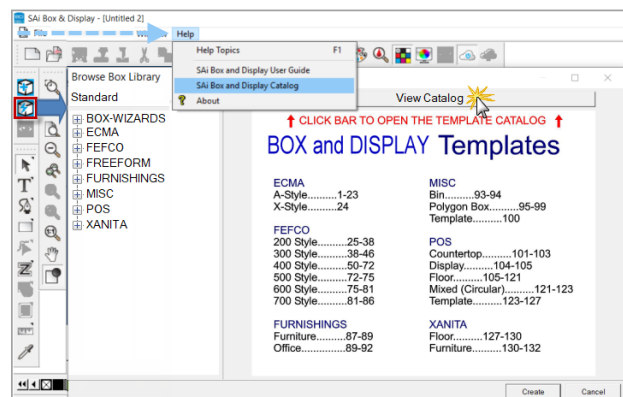
Watch the short video to get a quick overview of what will be discussed in this article.

 [How to Create a Corrugated POP Display in Seconds Using BD](#)


## New from Template icon

On the Flexi toolbar, clicking on the **lightning bolt**  button will allow you to **use existing templates** which can quickly and easily be modified to meet your requirements.

- Just select a template and click '**Create**'



## Library

**Browse Box Library:** When you start from a template, you will see this dialog. There is a dropdown menu to allow you to choose from the '**Standard**' library supplied or the '**User**' library of templates that you have previously created and saved to library. Open different category trees using the  icons. Once selected a preview of the template will appear on the right of the dialog.

To help you select the best template for use, there is a '**View Catalog**' bar which, when clicked, opens a PDF with details of all available templates and includes images of each template in 2D and 3D Views.

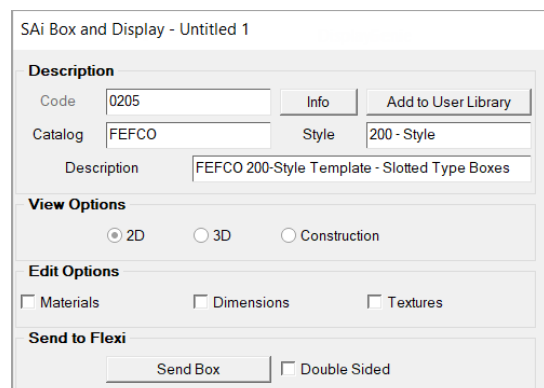
## Design using Friendly Page

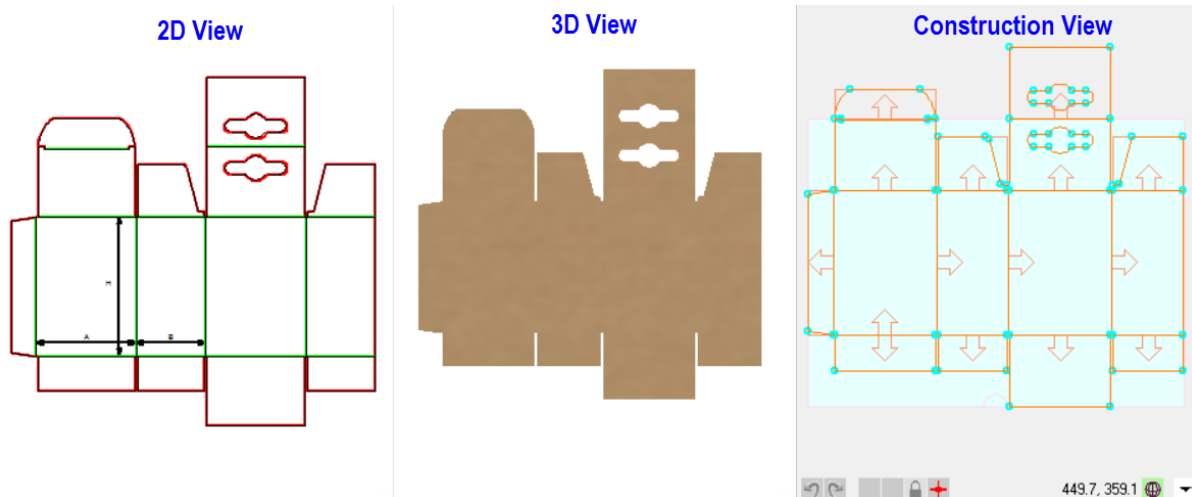
**Suggestion:** Select a FEFCO 0205 which is a simple box

- A dialog box (Friendly Page) is displayed for the selected template shown in the **Description**.
- Radio buttons for **View Options** allow you to select how your template is displayed. Default is **2D**.

Construction View allows you to edit the template to create your own design. To achieve this, the box is made up of a series of rectangles known as **sections** which are edited one at a time

The next page shows the different **Views**.

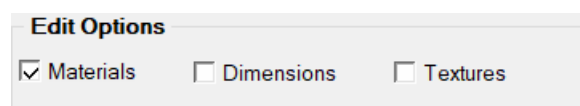




**Edit Options** can be used to make required adjustments. To display applicable options...

➤ Click **Materials**

- Enter your Material Thickness
- Make any other necessary material variable



➤ Click **Dimensions**

- Use the provided entry boxes to set the primary box dimensions for the box that is being created.
- **Flaps, slots and tabs** can be adjusted as required.

➤ Click **Textures**

- Options are provided to change the way the 3D preview renders.

To examine your project...

➤ Click the **3D** radio button in **View Options** and


- Simulate the folding of the box, by using the '>Play>' button now displayed under **Folding Control**, to ensure that the box fits together properly.
- You can zoom, pan and rotate your box.

➤ A production 3D PDF of the finished box can be created using the **Export 3D** button.

NB: Adobe Acrobat Viewer (free version download) required to view.

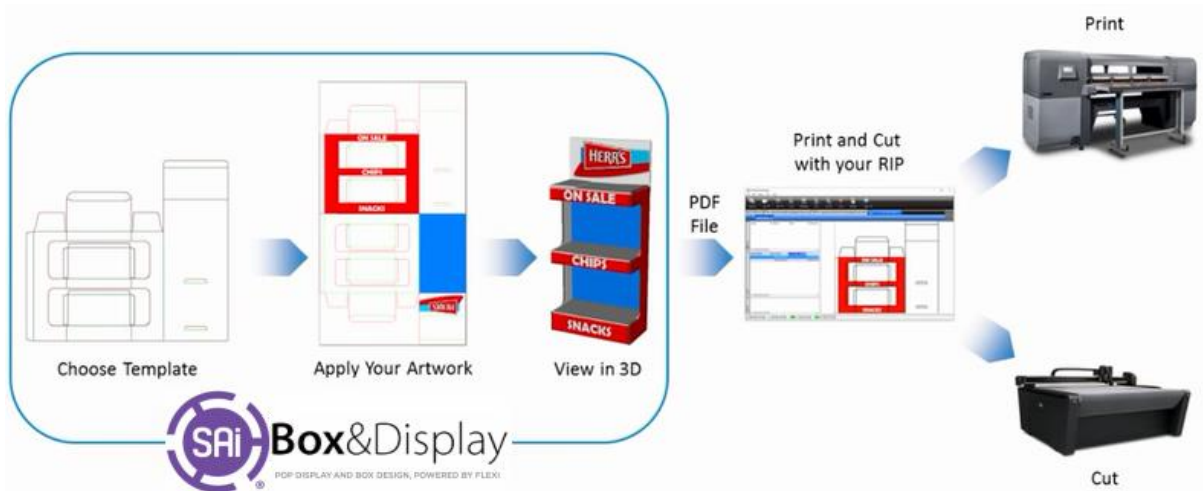
Once you are satisfied with the project...

➤ Click **Send to Flexi** – the box will now appear as contours in flexi.

- You can apply artwork to the design in the presented window.
- There are different colors, which represent different layers/cut operations.
  - ❖ Green lines are fold lines
  - ❖ Red lines are cut lines.
- To view artwork you need to...
  - ❖ click on the eye  icon to 'View in SAi Box Display'.
  - ❖ You will see the resulting placement of artwork using the **3D View Option**

Refer to the SAi Box and Display User Guide for detailed discussion.

- With no graphics being added, the file is ready for export to PDF or DXF.
  - Click **File > Export** and export the file, making sure to specify the desired file export format.
    - ❖ These files can be brought into whatever solution is used to output files to the CNC cutter, be that a CAD/CAM software or directly to the machine controller, depending on the machine.



#### FLEXI CUSTOMERS

If you have SAI Flexi Software, you can use Production Manager from your Flexi to send the cut files to your CNC cutting device.

Another option is to **File > Save** in Box&Display as an **FS** file, and then open the saved file into Flexi for sending to the cutter.

#### ENROUTE CUSTOMERS

If SAI EnRoute software is being used to drive your CNC cutting machine, you can use the **DXF** file format to bring the Box&Display files into EnRoute.

Another option is to use the **Send to EnRoute** icon to send the files to EnRoute if both programs, EnRoute and Box&Display, are located on the same machine.

## END OF QUICKSTART GUIDE

FOR TUTORIALS AND DETAILED STEP BY STEP INSTRUCTIONS  
REFER TO **SAI BOX & DISPLAY USER GUIDE**



# Box&Display