



## FreeForm Tutorial 102 – Fold Sequence

**Tutorial Video**  [Box and Display Tutorial 102](#) Learn how setup the fold sequence, take your design in and out of Flexi Sign Pro and then fold our finished box in SAI Box&Display.

### Step 1

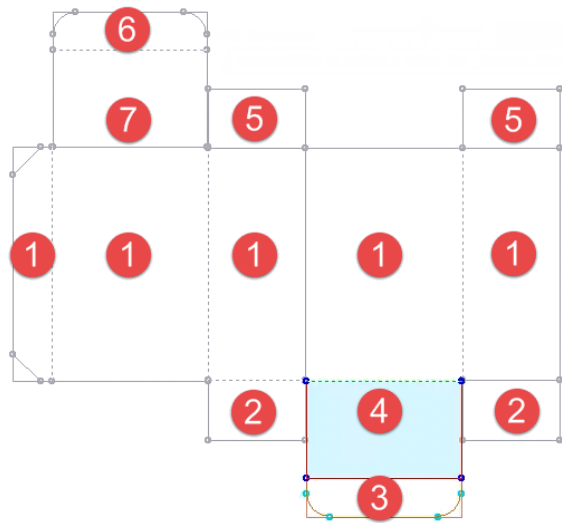
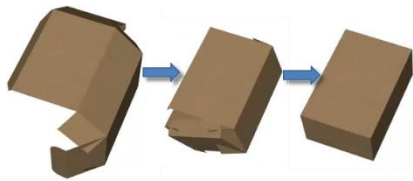
#### View in SAI Box Display

- **Open tutorial 101** that we saved in the previous tutorial
- Use the “eye”  button to **View in SAI Box Display**

Here is the box we created in Tutorial 101. The sections have been numbered as we are going to learn how to get the box to fold in sequence.

#### Sequence

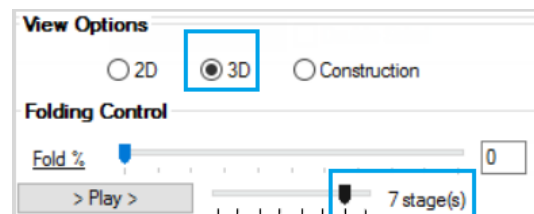
If we use the Folding Control, *without setting a sequence*, then the box will fold simultaneously (as shown). Since we want to watch the sections fold, we need to set the sequence for the fold.



### Step 2

#### Setting the Stages Slider

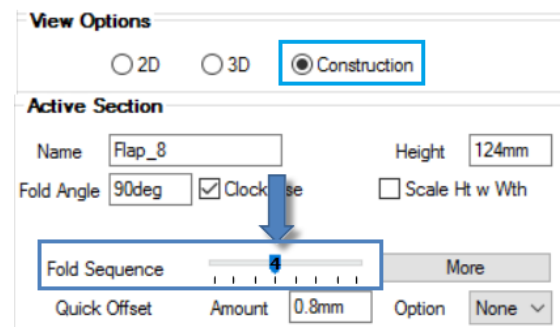
- Change the View Option to **3D**
- Set the Stages **slider to 7** by sliding the pointer, as shown, to the seventh mark. The comment should state ‘7 stage(s)’



### Step 3

#### Setting the Fold Sequence

- Change the View Option to **Construction**
- We are now going to select each box Section individually and assign a Fold Sequence number. We will number the Main Panels to fold 1st and then the bottom Dust Flaps 2<sup>nd</sup> and so forth.
- Double left click on **each of the sections one at a time** and set the **Fold Sequence** slider the number of ticks from the left to correspond to the number in image Step 1.



*Image in Step 1* shows an **Active Section** (highlighted in blue) with the **number 4** allocated. The *image in Step 3* shows the **Fold Sequence** marker set at 4<sup>th</sup> tick.


## Step 4

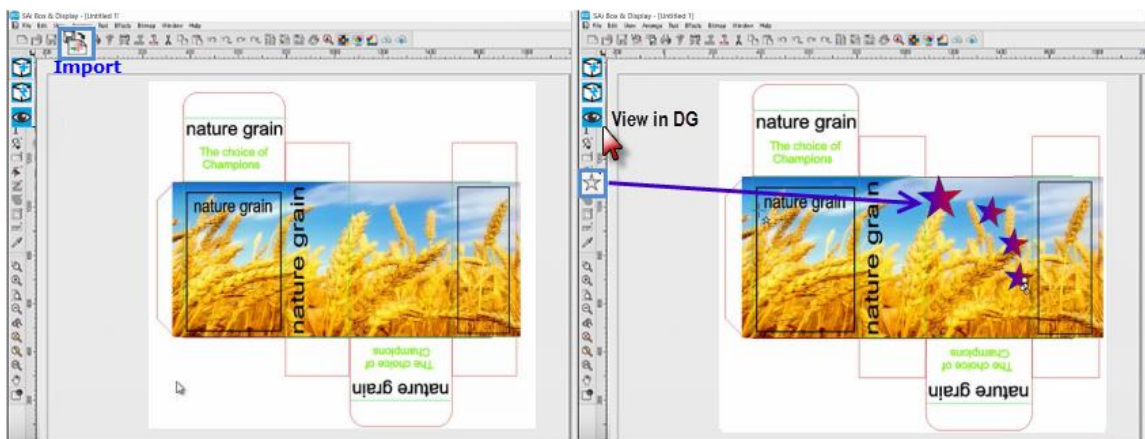
### Illustrate Box with Flexi

Now we will illustrate the box. To do this we need to give Flexi the cutting instructions, which is a DXF in 2D line view with cutting and creasing instructions.

1. **Send to Flexi** by clicking the **Send Box**.


**Close the BD Property Inspector**, using the top right X or minimize.

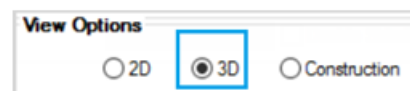
2. You can create your own design (see Chapter 7) or **Import** using the  on the Standard Toolbar artwork.
3. Here we have imported artwork and added some stars.



## Step 5

### View in SAI Box Display

- Then click on the eye  icon to 'View in SAI Box Display'.
- You will see the resulting placement of artwork using the 3D View Option.



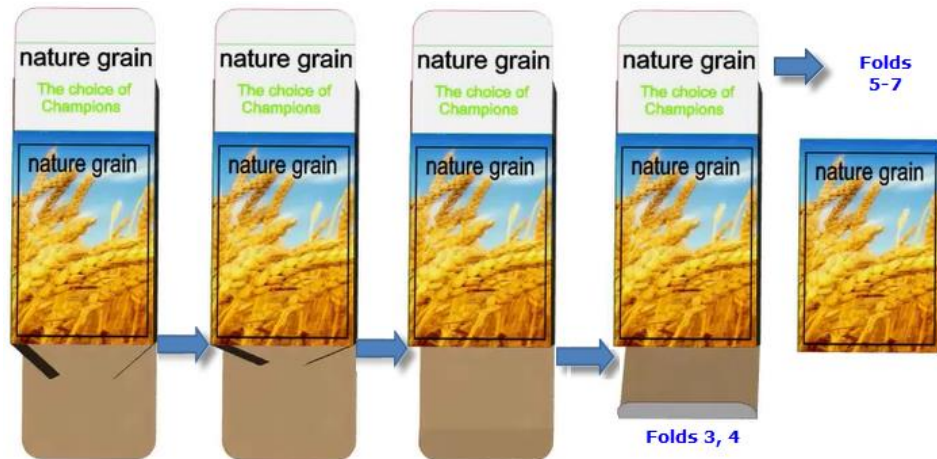
## Step 6

### Fold and Position Illustrated Box

- In the Properties window, Folding Control, as shown below, move the **Fold %** slider to the right to fold.
- Notice that the Main Sections that we previously set **Fold Sequence** to '1' folds first.



Then the Dust Flaps (set to Fold Sequence '2') will fold. Then Fold Sequence 3 to 7.

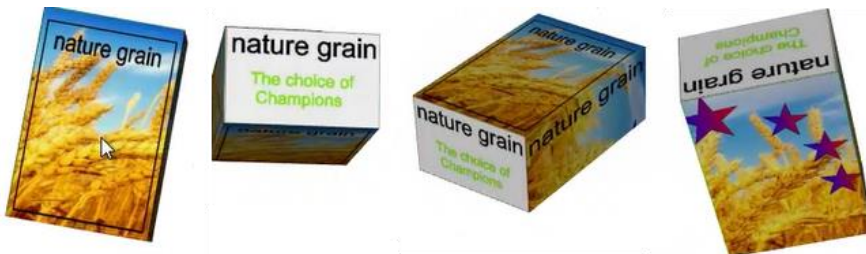


## Step 7

### Preview Pane Focus and Navigation

Move the mouse cursor to the preview pane and left click. This moves the mouse focus to the preview pane. Navigate the 3D box with the following mouse movements. In 3D preview...

- **Pan:** Hold Left and Right mouse buttons and drag to pan in any direction.
- **Zoom:** Use mouse wheel to zoom (◆) or Right click, hold and move mouse up & down on the screen  
◆ *if necessary left click on the pane first to get mouse and keyboard focus.*
- **Rotate:** Left click and drag to rotate the image (in centre to rotate out of the viewing pane, around the eBDe to rotate in the viewing pane)



See the end of **Tutorial 103** of the **SAI Box & Display User Guide** for more on **Fold Sequence**.

**Send to Flexi and Save File** for future use.

END OF FREEFORM TUTORIAL 102

FOR MORE TUTORIALS REFER TO SAI BOX & DISPLAY USER GUIDE



# Box&Display